

ncfi[®] National Center for Families Learning
FAMILIES LEARNING
CONFERENCE '24



Contents

- Land Acknowledgement1
- About NCFL 2
- President’s Letter 5
- Facility Map 7
- General Information 9
- Sponsors, Partners, and Exhibitors 11
- Exhibitor Passport 12
- Agenda 14
- Mainstage Speakers 15
- Masterclasses 21
- Featured Sessions 23
- Detailed Schedule 31

Visit FamiliesLearning.org to learn how we support family well-being and success through education.

©2024 National Center for Families Learning

A GREAT START LASTS A LIFETIME

PNC Grow Up Great® is helping to build brighter futures for our youngest neighbors. Guided by early childhood experts, this \$500 million, bilingual initiative provides the resources and experiences to inspire a lifelong love of learning.

To learn more, visit pncgrowupgreat.com



©2024 The PNC Financial Services Group, Inc. All rights reserved.
GUG 0624-038-2486902



TOYOTA



Join NCFL and Toyota in congratulating **Megan Singh**, Indianapolis, IN, for being selected the **2024 Toyota Family Teacher of the Year** and **Deniela Turner**, Huntsville, AL, as runner-up.



WINNER
Megan Singh
Indianapolis, IN



RUNNER-UP
Deniela Turner
Huntsville, AL

Land Acknowledgement

We acknowledge the Ni Okašq̄ (Osage) and Shawnee peoples on whose ancestral homelands we host the 2024 Families Learning Conference. We honor the indigenous peoples who were stewards of this land in the past, recognize the Native communities who have continued to live and work here throughout history and today, and acknowledge the harm caused to indigenous peoples by white colonialism both past and present. We are grateful for the land itself, which supports us with food, shelter, and materials.

To learn about the native land where you live and to find ways to support the tribes in your area, visit **Native-Land.ca**.



About NCFL

NCFL is a national nonprofit that has worked for more than 35 years to eradicate poverty through education solutions for families. We believe education is a shared, nonpartisan responsibility and that collaboration among families, schools, and community members can lead to powerful learning experiences. Throughout its history, NCFL has partnered with educators, literacy advocates, and community leaders to support multigenerational learning. When parenting adults and children are engaged in learning together, the whole family benefits, contributing to a thriving, equitable community.

Our Mission:

NCFL works to eradicate poverty through education solutions for families.

Our Vision:

By 2030, establish aligned and coordinated family learning systems in 60 communities, built with and for families, to increase education and economic outcomes and create more equitable communities.



Visit **FamiliesLearning.org** to learn more about NCFL's vision and how you can participate.



President's Letter

Hope is an action.

I am reminded of that every time I meet with parenting adults who've joined a family literacy program in the hope of creating a better life for their children. Every time I sit down with community leaders who are working to provide opportunities for families to be engaged and active partners in their children's education. Every time I work alongside organizations that tackle educational inequities and provide leadership opportunities in the hope of creating a level playing field for all learners.

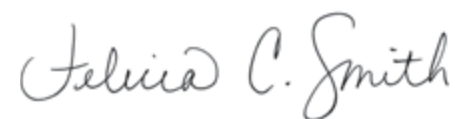
As we celebrate NCFL's 35th anniversary, I can't help but be grateful for the many families, communities, and state and local partners that have joined together with us to help channel their hope for a better tomorrow into transformative experiences advancing family well-being and success. Each year, I draw such inspiration as I listen to conference presenters share stories of impact with practical next steps and tools for conference attendees to help them redesign learning experiences and create a deeper sense of belonging and agency for families.

At the 2024 Families Learning Conference, we've curated a compelling lineup showcasing leading voices in family learning, including featured sessions from the Adult Literacy & Learning Impact Network (ALL IN), Unite for Literacy, Search Institute, Learning Heroes, World Education, PBS SoCal, Kentucky Education Television (KET), and many more. We're also honored to welcome Dana Suskind, MD, Daniel Vandever, and Mildred Otero to provide thought-provoking keynotes for our general sessions.

As many of you may know, NCFL was founded here in Kentucky in 1989. Since then, our vision for family learning has spread across the country and has expanded to encompass the multiple literacies and competencies necessary for families to succeed in a changing world. Today, NCFL's work includes Family Learning Communities in Kentucky, Nebraska, and Georgia; leadership of Statewide Family Engagement Centers (SFECs) in Colorado, Nebraska, and North Carolina; a long-standing and valued collaboration with the Bureau of Indian Education (BIE) encompassing 11 states and 54 BIE schools; and countless partnerships across the country to advance family learning opportunities. It's my pleasure to welcome you to the place where our mission took root 35 years ago. While you're here, I hope you'll take some time to explore some of the hospitality that our Kentucky home has to offer. You'll find the friendly staff from Louisville Tourism in the exhibitor area on Monday ready to help you make the most of your free time in the Derby City.

Finally, I have to take a moment to thank Toyota, PNC Grow Up Great®, the Dollar General Literacy Foundation, Brown-Forman, the Heising-Simons Foundation, and State Farm for helping to make the 2024 Families Learning Conference possible. It is my honor and privilege to work alongside our conference sponsors to create space for new practices to be discovered and new connections to be built. In communities across the country, many of you are overcoming barriers to create deliberate and meaningful impact in the lives of families, sustained by the power of hope in action. Over the next few days, I look forward to hearing your stories, lifting up your successes, and celebrating the multigenerational legacy of family learning.

Sincerely,



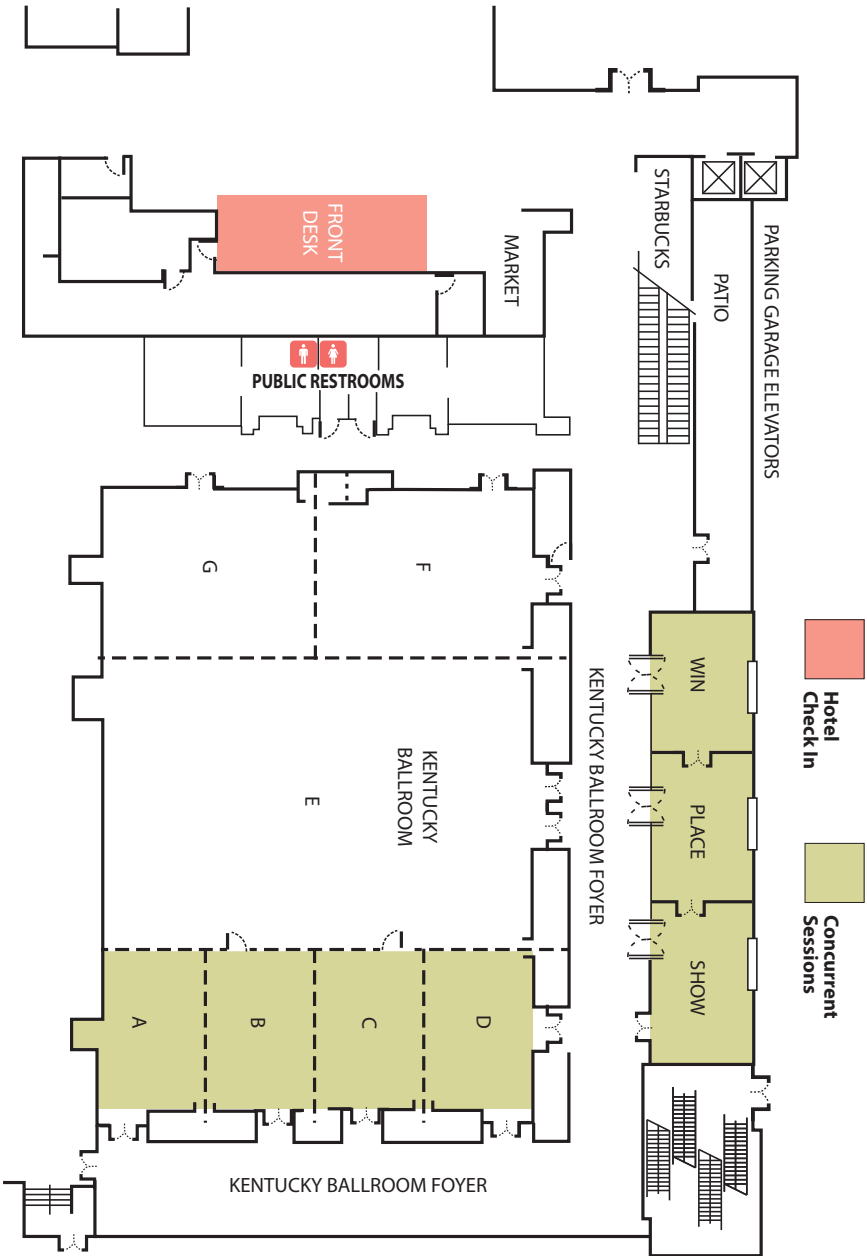
Dr. Felicia Cumings Smith
President and CEO
National Center for Families Learning



Facility Map

2nd Level

Ground Floor



-  Hotel Check in
-  Concurrent Sessions



Registration



General Sessions ("Mainstage")

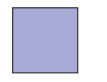
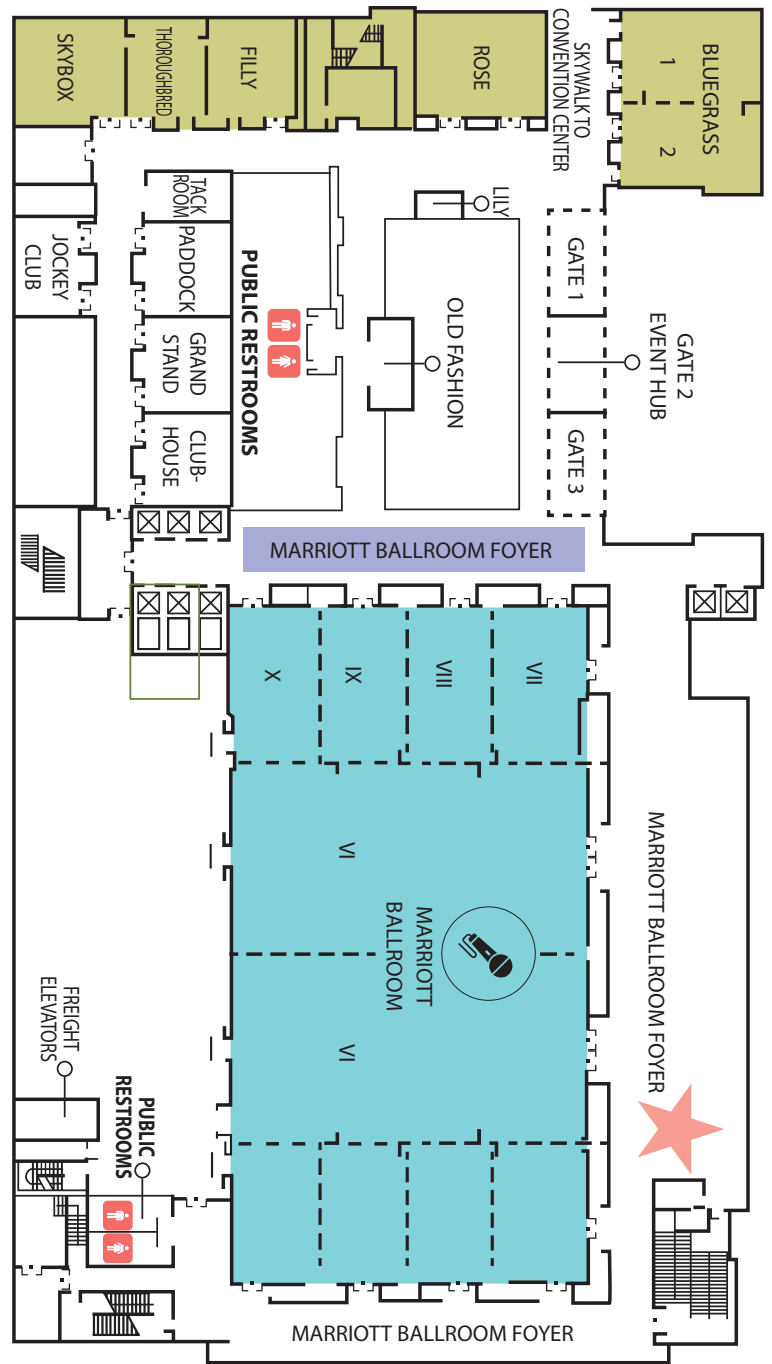


Exhibit Tables



Concurrent Sessions



General Information



Wifi

Sign on to **MarriottBonvoy_Conference** and enter password **ncfl24**

Join us on social media!

Use **#NCFL24** to share your conference experiences and “a-ha” moments, and be sure to tag NCFL:

 @FamiliesLearning  @FamiliesLearning

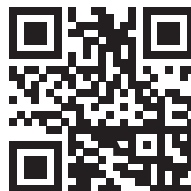
 @NCFL  @FamiliesLearning

Mobile App

Download our event app to build your schedule, view session descriptions, and connect with your fellow attendees! Get started by aiming your phone’s camera at the QR code. Then search for Families Learning Conference or enter event code **NCFL24FLC**.

Can’t download? Visit bit.ly/ncfl2024

Be sure to allow notifications so that you receive real-time alerts for any schedule changes.



Schedule Changes

In the event that a session is canceled, a sign will be posted outside the session room and a notification will be sent to conference mobile app users.

Nursing Mothers

Nursing mothers who are not staying at the Marriott may check out a sleeping room key for lactation purposes during open registration hours only. Visit the Registration Desk with your identification card to retrieve a key. The key to the lactation room will be made available until 45 minutes prior to Registration closing each day. See the Agenda on page 14 for registration hours.



Smile! You may be recorded or photographed.

- All persons on the premises of the 2024 Families Learning Conference consent by their participation to the reproduction of their likenesses in connection with the photography and recording of conference events.
- Please direct any questions or concerns to the Registration Desk or by emailing conference@familieslearning.org.

Safety Information

In the event of a fire, the hotel fire system will sound and hotel management will be in designated areas to help guests with next steps. Guests should exit the building through stairwells and first level doors only. Our gathering spot is at the south corner of 2nd and Jefferson. **In the event of a tornado**, hotel management will gather all guests into the Kentucky Ballroom. If capacity is reached, the Marriott Ballroom will be used. **In the event of an emergency**, call 9-1-1 or locate a hotel house phone and report the emergency and location to the hotel operator who will call the appropriate responder.

Meal Information

The hotel features Starbucks and Porch, the onsite restaurant. In addition, several options are available a short walk from the Marriott, including Dunkin’ Donuts, Qdoba, Jimmy John’s, Potbelly Sandwich Shop, Chipotle, and more at Fourth Street Live.

Food & beverage included in the 3-day registration fee:

Monday, Nov. 18

- Lunch at the Opening Session
- Appetizers and one complimentary drink at the Welcome Reception

Tuesday, Nov. 19

- Breakfast
- Afternoon snack

Wednesday, Nov. 20

- Coffee and tea
- Brunch at the Closing General Session

Vegan/vegetarian, nut-free and gluten-free options are available. When you registered, you were given the opportunity to indicate if you require a vegetarian, vegan, nut-free, or gluten-free meal. Upon check-in at the Conference, you should have received a meal ticket to give to your server at Wednesday’s Closing Session With Brunch to receive a special meal. See the Registration Desk for questions.

We want to hear from you!

Stop by our storybooth in Marriott Foyer to share how family learning has impacted your community.



Sponsors, Partners, and Exhibitors

NCFL is grateful for the support of the following organizations to help make the 2024 Families Learning Conference possible. Please stop by the exhibitor tables during open hours to learn more about each organization and their learning resources.

SPONSORS



PARTNERS



Exhibitor Passport

Name _____ Address _____

Email _____

Collect a stamp for all exhibitors and return to the Registration Desk to be entered into a drawing to win a prize at the Closing Session, courtesy of **State Farm/Matt Miller Insurance** and **Highlights Early Learning!**



Agenda

INVESTING IN OUR BEST SPIRIT

To Brown-Forman, being a responsible and caring corporate citizen is more than an investment; it embodies our company's purpose to enrich the experience of life. After 150 years in the business of spirits, we understand that our best spirit is the community we call home.

Please celebrate responsibly.



Matt Miller Insurance Agcy Inc.

Brittany Horsley

Multiple Line Representative



8321 Preston Highway
Louisville, KY 40219



502-964-6288



brittany@insuremematt.com

Sunday, November 17

12:00 p.m. to 6:00 p.m.	Registration open
1:00 p.m. to 4:00 p.m.	Pre-Conference Masterclasses (signup required)

Monday, November 18

7:00 a.m. to 5:00 p.m.	Registration open
8:00 a.m. to 9:00 a.m.	Exhibits, networking
9:00 a.m. to 10:15 a.m.	Concurrents 1
10:30 a.m. to 11:45 a.m.	Concurrents 2
12:00 p.m. to 1:30 p.m.	Opening Session With Lunch
1:45 p.m. to 3:00 p.m.	Concurrents 3
3:00 p.m. to 3:30 p.m.	Break
3:30 p.m. to 4:30 p.m.	Concurrents 4
5:00 p.m. to 6:30 p.m.	Welcome Reception

Tuesday, November 19

7:30 a.m. to 5:00 p.m.	Registration open
7:30 a.m. to 8:30 a.m.	Breakfast, exhibits, networking
8:30 a.m. to 9:30 a.m.	General Session
9:30 a.m. to 10:30 a.m.	Daniel Vandever Book Signing
9:45 a.m. to 11:00 a.m.	Concurrents 5
11:00 a.m. to 11:30 a.m.	Break
11:30 a.m. to 12:45 p.m.	Concurrents 6
12:45 p.m. to 2:15 p.m.	Lunch on own
2:15 p.m. to 3:15 p.m.	Concurrents 7
3:15 p.m. to 3:45 p.m.	Snack Break
3:45 p.m. to 4:45 p.m.	Afternoon General Session

Wednesday, November 20

7:30 a.m. to 12:00 p.m.	Registration open
7:30 a.m. to 8:30 a.m.	Coffee, exhibits, networking
8:30 a.m. to 9:30 a.m.	Concurrents 8
9:45 a.m. to 11:00 a.m.	Concurrents 9
11:15 a.m. to 12:45 p.m.	Closing General Session With Brunch

SAVE THE DATE

2025 Families Learning Conference

November 2-5, 2025

Attend the Closing Session With Brunch to find out where we're headed next!

Mainstage Speakers

Opening Session

Monday, November 18 | 12:00 p.m. - 1:30 p.m.



Britainy Beshear

First Lady of Kentucky Britainy Beshear has long been an advocate for Kentucky's children and has been there for them and their families during many challenging times.

Throughout the pandemic, she led efforts to keep kids safe at school through her "Coverings for Kids" program, for which thousands of Kentuckians, as well as businesses like Ford Motor Co., donated more than a million facial coverings directly to local school districts.

From supporting the Purple Star Certified program to visiting Kentucky's military bases, the First Lady has worked to support and lift up military children who make sacrifices daily so that their loved ones can serve and protect our country.

The First Lady has also been dedicated to the safety of Kentucky's children and families through her work raising awareness around human trafficking as a member of the National Coalition for the Prevention of Human Sex Trafficking.

Mrs. Beshear is actively involved in her children's education and volunteers in their classrooms and after-school programs. The family enjoys many volunteer activities with Family Scholar House and Dare to Care Food Bank, both in Louisville, and God's Pantry in Lexington.



Kristen Byrd

Kristen Byrd is regional president of PNC Bank, Kentucky. She is responsible for overseeing all aspects of PNC's operations in Kentucky and southern Indiana markets including Retail Banking,

Corporate & Institutional Banking and Private Banking. Byrd is also responsible for sponsorship and philanthropic efforts important to PNC in the region.

Prior to being named to her current role in March 2022, Byrd served as senior vice president and regional banking director of PNC Private Bank®. Since joining the bank in 2002, Byrd has held a variety of roles in retail, business banking, and private banking.



Alicia Isaiah - PARTICIPANT SPEAKER

Alicia Isaiah is a proud graduate of the University of Toledo in Ohio. As a dedicated mother of five, she actively contributes to her community, serving on a Site-Based Decision Making Council, as a

PTA vice president, and on an NCFL Activate! Local cohort. She also played a key role in revising the student handbook for her district.

Alicia has a diverse professional background, having worked in various corporate roles. She has served as a Program Manager with the YMCA and has experience teaching English as a Second Language. Her commitment to early childhood education drives her efforts to support and uplift young learners in her community.

In her spare time, Alicia enjoys spending time with her husband and family and serving her community.



Felicia C. Smith, Ed.D.

Dr. Felicia C. Smith is President and CEO of the National Center for Families Learning (NCFL). A lifelong educator and national thought leader for teaching and learning, Smith brings decades of valuable experience to advance NCFL's mission of working to eradicate poverty through education solutions for families. She has served in a variety of leadership roles in P-12, higher education, nonprofit, and philanthropy. Her unique vantage point of a learner's educational trajectory, from preschool to adulthood, is a result of her experience in leading across multiple education systems. Smith holds an Ed.D. in education leadership and administration from the University of Kentucky, an M.A. in elementary education with an emphasis on K-12 literacy development, and a B.S. in elementary education from the University of Louisville.

Follow Dr. Felicia C. Smith on X @DrFCSmith or LinkedIn.



KEYNOTE

Dana Suskind, MD

Dana Suskind, MD, is Founder and Co-Director of the TMW Center for Early Learning + Public Health, Founding Director of the Pediatric Cochlear Implant Program, and Professor of Surgery, Pediatrics, and Public Policy (affiliated) at the University of Chicago. A recognized thought leader on the national stage, Dana has dedicated her research and clinical life to optimizing foundational brain development and preventing early cognitive disparities and their lifelong impact. Her work is focused in particular on helping parents leverage their power as brain architects.

Dr. Suskind is the author of Parent Nation: Unlocking Every Child's Potential, Fulfilling Society's Promise and Thirty Million Words: Building a Child's Brain. She is a member of the American Academy of Pediatrics, a Fellow for the Council on Early Childhood, and an Honorary Professor at the Australian National University. Her work has been profiled by numerous media outlets, including The New York Times, The Economist, Forbes, NPR, and Freakonomics.

Welcome Reception

Monday, November 18 | 5:00 p.m. - 6:30 p.m.



Mayor Craig Greenberg

Mayor Craig Greenberg is a proud Louisvillian, husband, father, and entrepreneur who believes in thinking big, working hard, and making things happen. Mayor Greenberg is committed to moving Louisville in a new direction by focusing on key priorities that support the values of Louisville families, including public safety, affordable housing, economic development, universal pre-K for all 3 and 4-year-olds and more.

A proud graduate of Jefferson County Public Schools, the University of Michigan, and Harvard Law School, Mayor Greenberg was an attorney before helping launch and lead 21c Museum Hotels. He is a former board member of the University of Louisville and is now a co-owner of Ohio Valley Wrestling. Mayor Greenberg has been married to his wife, Rachel, for 24 years and they have two sons, Daniel and Benjamin.

Mainstage Speakers

General Session

Tuesday, November 19 | 8:30 a.m. - 9:30 a.m.



William Mehojah, Jr.

William Mehojah, Jr., a member of the Kaw Nation, founded the First One Hundred Institute. He is a former Director of the Office of Indian Education Programs in Washington, D.C., responsible for managing 185 elementary and secondary schools and two post secondary schools located in 23 states, providing education to over 47,000 American Indian students. He served in various positions in that office, including Deputy Director for eight years, Special Assistant to the Director, Branch Chief for Elementary and Secondary Education, and Division Chief for Education Programs.

Mr. Mehojah previously worked in Alaska for seven years, where he was responsible for management of a technical assistance office serving 59 schools. He also worked with Alaska tribal governments and corporations that served Alaska natives. Mr. Mehojah understands education at the classroom level. He has been a teacher, counselor, and administrator, starting his career in South Dakota. Mr. Mehojah retired from the Bureau of Indian Affairs in 2008. He has continued working with tribes since his retirement in the areas of early literacy and school construction. Mr. Mehojah was the National Indian Education Association Indian Educator of the Year in 2004. That year he also received the Goodling Award for Leadership from the National Center for Family Literacy located in Louisville, Ky., and the Partnership Award from the Parents as Teachers National Center in St. Louis, Mo. He has served on the Board of Directors for the Parents as Teachers National Center and the High Scope Research Foundation in Ypsilanti, Mich.



Larissa Red Eagle

Larissa Red Eagle learned of the Family and Child Education (FACE) program when she moved to Kyle, South Dakota. Her family joined the program at Little Wound School in 2014 and has been involved with FACE ever since.

Larissa was a full-time college student and a stay-at-home mother when she first joined FACE. With the added support of the program, Larissa completed her Associate of Science degree in Life Science and continued to pursue a Bachelor of Arts degree in Leadership and Communication. She is now a full-time employee with the FACE program at Little Wound School, serving as a Family Enrichment Parent Educator. She is actively involved in both of her children's academic and extracurricular activities. Larissa has dedicated a lot of her time and energy to giving back to the children of the community. She enjoys coaching her daughter's t-ball team and assisting with her son's baseball team during the summer. She highly believes in guiding young individuals and fostering each one's personal development.



KEYNOTE

Daniel Vandever

Daniel Vandever (Diné) is an award-winning author and entrepreneur from Haystack, NM. He is the CEO of South of Sunrise Creative, a strategic communications firm that helps advance education initiatives through a community-based approach.

Vandever is a product of Small Wonders Day Care where his experiences as a Ninja Turtle helped shape the creativity behind his debut picture book, *Fall in Line, Holden!*, a 2018 Honor Book for the American Indian Youth Literature Award. His follow up picture book, *Herizon* (2021), was self-published and was recognized as the Best Picture Book of 2022 by the American Indian Library Association. Two books authored by Vandever are set for release in 2024: *Behind Every Rug* and *We Weave*.

Vandever received his undergraduate degree in Strategic Communications from the University of Missouri and a master's degree in Community and Regional Planning from the University of New Mexico. He is the grandson of Navajo Code Talker Joe Vandever Sr., USMC.

Heising-Simons Foundation is proud to sponsor the 2024 Families Learning Conference

The Foundation's Education program works with its many partners to enhance the education of our youngest learners, birth to 3rd grade. Learn more on our website.



**HEISING-SIMONS
FOUNDATION**

Unlocking knowledge, opportunity, and possibilities

Mainstage Speakers

Closing Session

Wednesday, November 20 | 11:15 a.m. - 12:45 p.m.



KEYNOTE

Mildred Otero

Mildred Otero is the President of Leadership for Educational Equity (LEE), an organization focused on developing leaders to change the face and values of civic leadership in America. In this role, she ensures LEE members have high quality leadership development experiences across LEE's core leadership pathways.

Before joining LEE, Mildred served as chief education counsel for the U.S. Senate Committee on Health, Education, Labor, & Pensions, where she managed the Senate majority's education agenda, and its policy development and strategy for children from cradle to career including early childhood education, elementary and secondary education, higher education, and the workforce.

Previously, Mildred served as a senior policy officer with the Bill and Melinda Gates Foundation; senior advisor at the United States Department of State/United States Agency for International Development; senior policy advisor to then Senator Hillary Rodham Clinton (D-NY) and Sen. Jack Reed (D-RI) in the US Senate. Before her work in Washington, D.C., Mildred was a counselor for child victims of sexual and physical abuse at the Brooklyn District Attorney's office.

Connect with Mildred on LinkedIn or via her website (mildredotero.com) to stay updated on her latest insights, projects, and endeavors.



Rosaura Ibeth Espinoza Zavala

Rosaura Ibeth Espinoza Zavala participated in this past year's Activate! Local in Denver, Colorado. The city has been home for Rosaura and her family for over 8 years. As the mother of four futures for the world, she recognizes the importance of being an example for them. As a part of Activate! Local, she saw that no matter who you are, you can advocate for your rights and for your children. The experience strengthened her own desire to impart security and the desire to fight for her children.



Holly Walters

Holly Walters is chief information officer and group vice president of information systems for TMNA. Walters oversees the company's information systems, solutions, and technology.

Previously, Walters was president and CEO of Toyota Financial Savings Bank (TFSB). In this role, Walters oversaw all of Toyota's U.S. banking operations, which provide a range of services to Toyota and Lexus dealers as well as consumers.

Walters has also served as vice president of information and digital systems for Toyota Financial Services (TFS), where she was responsible for the development and delivery of business capabilities to the company's sales, originations, servicing, channel management, dealer lending, insurance, and transaction platform functions.

Prior to joining Toyota in 2007, Walters held senior roles in the banking sector, focusing on the integration of technology and business operations, solution development and deployment, as well as IT risk and compliance.

Walters earned a Bachelor of Arts degree in both Economics and Business Administration from Muskingum College, New Concord, Ohio, and an MBA from The Ohio State University.



Lt. Governor Jacqueline Coleman

Jacqueline Coleman is the 58th Lieutenant Governor of Kentucky. She is a life-long Kentuckian, educator, basketball coach, writer and founder of a nonprofit.

Public service is a way of life for Jacqueline and her family. She was raised on a farm in Burgin, where her family owned a small business for five generations. Her upbringing, including her father's tenure as state representative, taught her to help those in need and, as a result, she has devoted her personal and professional life to service.

As the state's highest elected teacher, Jacqueline is a vocal and passionate advocate for public education. She believes education is the key to providing Kentuckians opportunities for transformational change that can create new cycles of success. She began her career as a high school civics teacher in her hometown at Burgin High School.

Her experience in Emerge Kentucky inspired her to found her own nonprofit, Lead Kentucky, in 2013. Lead Kentucky ensures Kentucky's college women are prepared, encouraged, and empowered to seek leadership positions on their campuses and later in their professional lives. Since its inception, Lead Kentucky has empowered students on more than a dozen college campuses.

Masterclasses

Sunday, November 17 | 1:00 p.m. - 4:00 p.m.

Please note: registrants must sign up in advance to attend.
See the Registration Desk if you haven't sign up but would like to attend.



Candy Magaña, MPA
Director of Strategic Alignment, Equity and Inclusion, Aledade

Masterclass:

Introductory Family Engagement

Bridging Health and Education Through Evidence-Based Health Literacy Strategies

Health literacy is the degree to which individuals have the ability to find, understand, and use information and services to inform health-related decisions and actions for themselves and others.⁽¹⁾ It is estimated that 36% of U.S. adults have some difficulty understanding and reading health information.⁽²⁾ Health literacy is a key driver of preventable ED visits⁽³⁾, hospitalizations⁽⁴⁾ and disengagement from the healthcare system. Addressing low health literacy needs through communication is key to stakeholders understanding their health, following up on their care plans and utilizing appropriate plan services to maintain best health. Similar connections can be made to students and their families in following up on assignments, understanding learning plans and accessing community resources. Strong communication among educators and families helps foster a supportive and positive learning environment.

In this masterclass, we will explore two evidence-based health literacy resources: (1) the Patient Education Materials Assessment Tool (PEMAT) and (2) the teach-back method, or "closing the loop," a communication technique that helps ensure patients understand the information they need to know. Collectively we will also discuss the application of these resources in the education space to improve both verbal and written communication to a variety of stakeholders in various settings.



Andy Rollins
Health Equity Strategy Lead, Humana, Inc.

Masterclass:

Introductory Family Engagement Research & Evaluation

Developmental Relationships

What happens in relationships that makes them so important to young people's growth and learning?

Search Institute research has identified five key elements of a relationship that, like the roots of a tree, are the source of nourishment, stability, and resilience for young people. Ongoing Search Institute studies show that when young people experience relationships characterized by the five elements of Search Institute's Developmental Relationships Framework, their social-emotional skills are stronger, their academic outcomes are better, and their risk behaviors are lower.

In this session, participants will:

- Recognize the role that developmental relationships have played in their own lives and make a personal connection and commitment to building developmental relationships
- Understand the elements of developmental relationships that have emerged through Search Institute's ongoing applied research
- Identify and develop opportunities to build upon their relational strengths and to address their areas for growth



Charla Hale
Trainer
Search Institute

Intermediate Family Engagement Family Leadership

Masterclass:

Fragile Neighborhoods: Strategies for Success

Many of us work in fragile neighborhoods, places with broken homes, weak associations, loneliness, and drug overdoses. Instead of viewing these places as empty vessels to be rescued by outside service providers, we should look for local leaders, activists, and innovative social entrepreneurs to make things better. But not just any help will do. Instead, the pathway to revitalization is to work horizontally across the landscape to strengthen the interconnected web of institutions and relations in each place. Resources can help, but without social cohesion, they are insufficient. Rather than replace these leaders with fancy new policy interventions, we should help communities build on what's working.



Seth D. Kaplan, Ph.D.

Professorial Lecturer, Paul H. Nitze School of Advanced International Studies (SAIS) at Johns Hopkins University
Senior Adviser, Institute for Integrated Transitions
Senior Consultant, World Bank, USAID, State Department, and OECD

Intermediate Family Engagement Research & Evaluation



Dr. Darcy Hutchins

Director of Family, School, Community Partnerships
Colorado Department of Education (CDE)

Masterclass:

The Global Family, School, and Community Engagement Rubrics: An International Research Collaboration to Strengthen Global Praxis and Partnerships

From Brazil to Australia, and Colorado to Colombia, members of the Global Family Engagement in Education Network—a community of practice coordinated by the Center for Universal Education at the Brookings Institution—identified a need for school-based resources to collectively assess family, school, and community engagement practices and to build more inclusive and equitable partnerships. In 2022, the Center Universal Education teamed up with the Colorado Department of Education and education leaders from five countries to co-construct the Global Family, School, and Community Engagement Rubrics tool based on Colorado's foundational work. This open-access rubrics tool guides schools, districts, and civil society organizations through their own exploratory assessment and strategy development process. These internationally piloted rubrics examine schools' progress on building inclusion, trust, learning, and resources for engaging families (Epstein et al., 2018; Mapp & Bergman, 2021). The rubrics were piloted over the course of two years with school districts in Colorado as well as six government schools in Brazil and Colombia. This workshop guides teams through how to use these tools to improve their own partnerships and practices, and details the process of developing and testing the rubrics to ensure they respond to diverse school communities around the world.



Richaa Hoysala

Senior Research Analyst
The Brookings Institution
and Center for Universal Education

Featured Sessions

Monday, November 18 | 9:00 a.m. - 10:30 a.m.

Creating Equitable and Thriving Communities Through Family Learning Systems

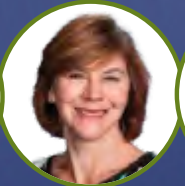
In March 2023, NCFL launched a bold new vision to coordinate and align family learning systems built with and for families in sixty communities by 2030. This session will highlight the early work of NCFL's family learning communities. Our panelists will discuss how they collaborate with community partners and NCFL to provide family engagement, family literacy, and family leadership systems of support that lead to more equitable outcomes for families. Successes and lessons learned will be shared, and participants will walk away with ideas for engaging families and the institutions and organizations that serve them in designing family learning systems in their communities.



Tracy Teater
National Center for Families Learning



Miranda Scully
Fayette County Public Schools, Kentucky



Amy Shane
Holt/Boyd Community Connections Collaborative, Nebraska



Wendy Falb
Literacy Center of West Michigan



Carla DeBose
Technical College System of Georgia / Georgia Certified Literate Community Program

Monday, November 18 | 10:30 a.m. - 11:45 a.m.

ALL IN: Generating Access to Adult Literacy Skills

Literacy is critical to greater equity for adults and families. It enables the power to communicate, access resources and opportunities, and make informed decisions about health, children's education, and civic engagement, for example.

Join leaders from the Adult Literacy and Learning Impact Network in partnership with FTI Consulting to glean insights from new market research to understand the diverse lived experiences and perspectives of adults who struggle with literacy, generating innovative, cross-sector solutions.



Sarah Cacicio
Adult Literacy and Learning Impact Network



James Condon
FTI Consulting

Monday, November 18 | 10:30 a.m. - 11:45 a.m.

Approaches to Multilingualism in Family Literacy

At both the National Center for Families Learning (NCFL) and World Education (WE), we believe that multilingual literacies are never barriers to success. We also recognize that multilingualism is an asset to creating richer adult learning experiences, stronger family engagement, and inclusive and equitable communities. In this session, we highlight various initiatives promoting multilingualism in adult education and family literacy that support this belief.



Alexis Cherewka
World Education



Anna Kaiper-Marquez
National Center for Families Learning

Monday, November 18 | 1:45 p.m. - 3:00 p.m.

Funders in Conversation: Diverse Philanthropic Viewpoints on Family Engagement and Multigenerational Education

Join Grantmakers for Education along with local, regional, and national funders to hear philanthropic insights on current and future investment trends and focus areas in multigenerational education and family engagement in education. Participants will share their lenses on these subjects based upon their distinctive positions in this funding space. This is a great opportunity for conference attendees to hear diverse funder perspectives as they navigate and respond to old, new, and changing issues within the U.S. education landscape.



Moderated by:
Kyle Malone
Grantmakers for Education

Panelists:



Denine Torr
Dollar General Literacy Foundation



Dr. Kimberly Brenneman
Heising-Simons Foundation



Dr. Nancy Cable
William R. Kenan, Jr. Charitable Trust



Bleik Pickett
James Graham Brown Foundation

Featured Sessions

Monday, November 18 | 3:30 p.m. to 4:30 p.m.

Family Math: Building Parent and Caregiver Confidence and Math Positivity to Support Early Math Learning

Uncover the joy of math in everyday experiences at this engaging session presented by PBS SoCal and KET Education. Join us as we introduce Family Math, a bilingual, multiplatform family engagement program that makes math learning at home fun and accessible. We will share practical tools and resources, including parent workshops, hands-on activities, and original videos co-designed with families to support children's math education at home. In addition, KET Education will showcase its success in integrating Family Math into its outreach efforts as a program grantee.



Holly Ackerman
Kentucky Educational Television



Emily Cornett
Kentucky Educational Television



Khrystal Alas
PBS SoCal

Monday, November 18 | 3:30 p.m. to 4:30 p.m.

Helping Families Go Beyond Grades and Report Cards

Did you know almost 9 in 10 parents think their kids are on grade level, yet only half of students start the school year doing grade-level work? Discover why report card grades can be misleading. Grades matter, but they don't tell the full story—especially for students with unique learning differences! Join us and discover practical tools and resources to better understand students' unique needs, foster home-school partnerships, and Go Beyond Grades!



Cornelia Calliste
Learning Heroes

Monday, November 18 | 3:30 p.m. to 4:30 p.m.

Overcoming Barriers Through Policy and Advocacy

Barriers to effective family engagement can be intentionally or unintentionally created by institutions, state or federal regulations, procedures and/or policies. Barriers vary from school-level policies that schedule family events during parents' working hours to macro level policies around educational funding streams. In this session, we will guide participants to identify policy barriers in family engagement and to draft policy recommendations about a barrier of their choice.



Jenna Meglen
Partners for Rural Impact



Jenny Hobson
Partners for Rural Impact



Becky Phelps
Partners for Rural Impact

Tuesday, November 19 | 9:45 a.m. - 11:00 a.m.

Latino Families With Children: Insights and Experiences With Social Assistance Programs and Early Education and Care

Hispanic children and youth are the fastest, youngest growing population in the U.S. While many Latino children live in neighborhoods that do not have access to high-quality early education, Latino children, on average, are raised in a home environment that offers economic stability and security, the presence of two parents, high rates of parental employment, and socially supported family and community networks. Furthermore, though Hispanic children's school achievement outcomes lag behind those of their peers, their socio-emotional developmental outcomes are on the same level or better. Latino child poverty is at rates two to three times higher than peers yet receipt of government income supports and related benefits is lower. In this session, we apply a strength-based framework and a review of policy design and implementation features to inform how to support social investments on Latino children and families.



Dr. Lisa Gennetian
Duke University

Featured Sessions

Tuesday, November 19 | 11:30 a.m. to 12:45 p.m.



Gene Roehlkepartain
Search Institute

Expanding the Community Vision for Families

Most systems that affect families—schools, youth programs, faith communities, child and family services, health care, and many others—rarely see themselves as collaborators with families. This session invites participants to re-imagine community partnerships that discover innovative ways that multiple formal and informal systems can connect through shared commitments to equitable, strength-based, and relationship-centered family partnerships to support thriving children, youth, and families.

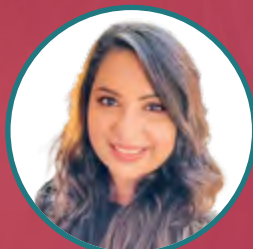
Tuesday, November 19 | 11:30 a.m. to 12:45 p.m.

Meet LEO: Learn and Explore Online With Google

Google's Meet LEO (Learn and Explore Online) program partners with family-focused organizations to help parents, caregivers, and educators confidently navigate the digital world. Through workshops and resources, LEO provides the knowledge and tools to make informed decisions about online safety and digital learning for adults engaging with kids and families.



Arden Haselmann
Google



Nisha Patel
Google



Nazifa Nasim
Google

Tuesday, November 19 | 2:15 p.m. - 3:15 p.m.

Shared Reading: A strategy to boost MATH learning!

We all know shared reading between children and adults fosters language and literacy outcomes. But did you know it can also promote young children's math skills? In this interactive session, participants will: (1) gain knowledge about why and how children learn math during shared reading, (2) learn about and practice strategies for fostering math talk during shared reading, and (3) leave with resources and a tailored action plan for making math a part of their future story time repertoire.



Holly Kreider
National Association for Family, School and Community Engagement



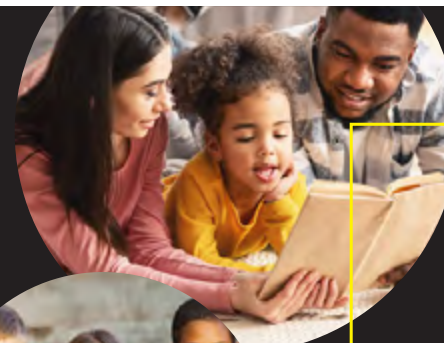
Rebecca Chrystal
Raising a Reader



Dr. Savitha Moorthy
Tandem, Partners in Early Learning



Dr. Gigliana Melzi
New York University



investing in our **COMMUNITIES**
investing in our **FUTURE**



GIVE. DREAM. HOPE.

Featured Sessions

Tuesday, November 19 | 3:45 p.m. - 4:45 p.m.



Moderated by:
Sally McCrady
PNC Bank / PNC
Foundation



Panelist:
Andrea Brown
National Center for
Families Learning

PNC EdTalk – Outdoor Play as a Vehicle for Learning and Development

The PNC Foundation’s recent 2024 commitment to supporting learning opportunities through outdoor play promotes nature-based experiences in communities to enhance positive early childhood development. PNC Foundation Chair and President Sally McCrady facilitates an engaging conversation with Louisville-based nonprofits that emphasize and develop innovations in outdoor, play-based learning in community and early childhood settings. Participants will share why they focus on outdoor education in early childhood, their successes in this space, lessons learned and new challenges on the horizon that they seek to address. Enjoy an afternoon snack while learning about the science between outdoor and play-based education, how organizations are implementing strategies in their local community, and ways in which to integrate new outdoor learning experiences into existing initiatives.



Panelist:
Cori Gadansky
Community
Coordinated
Child Care



Panelist:
Claude Stephens
Bernheim Arboretum
and Research Forest

Wednesday, November 20 | 8:30 a.m. to 9:30 a.m.



Mike McGuffee
Unite for Literacy



James Erkeson Ph.D.
University of
Northern Colorado

Community Book Gardens: Fertile Soil for Community-Based Family Literacy

What can we do for families living in a book desert? Grow a Community Book Garden. This session will explore practical strategies for curating, creating, and sharing picture books that reflect the unique cultural and linguistic backgrounds of the families you serve. The goal is to establish vibrant, community-driven spaces where families can access relevant picture books and actively participate in the book system. This approach empowers families to grow lifelong readers, build a sense of belonging, and strengthen social ties.

Wednesday, November 20 | 9:45 a.m. to 11:00 a.m.



Cherry Boyles
National Center for
Families Learning

A Conversation With Kentucky’s Driving Possibilities Team: Lessons Learned From Codesigning With Community, Industry, and Educational Partners

Join leadership team members from the Kentucky Driving Possibilities communities to discuss lessons learned when codesigning with students, families, and community partners. Conference attendees will learn how the principles of codesign help to establish and propel partnerships towards collective action to address the needs of community members and achieve programmatic impact for children and families.



Kim Sweazy
Toyota



Carrie Rogers
Fayette County
Public Schools



Miranda Scully
Fayette County
Public Schools



Carrie Boling
Fayette Education
Foundation



Jennifer Tackett
Scott County Schools



Stephanie Emmons
Scott County Schools

Detailed Schedule

Sunday, November 17



12:00 pm - 6:00 pm | Marriott Foyer

Registration Open

1:00 pm - 4:00 pm | Marriott Salon X

The Global Family, School, and Community Engagement Rubrics: An International Research Collaboration to Strengthen Global Praxis and Partnerships

Dr. Darcy Hutchins, Colorado Department of Education

Richaa Hoysala, The Brookings Institution and Center for Universal Education

Family Engagement | Policy & Advocacy | Introductory

1:00 pm - 4:00 pm | Marriott Salon VII

Fragile Neighborhoods: Strategies for Success

Seth Kaplan, Johns Hopkins University

Family Engagement | Family Leadership | Intermediate

1:00 pm - 4:00 pm | Marriott Salon VIII

Bridging Health and Education Through Evidence-Based Health Literacy Strategies

Candy Magaña, Aledade

Andy Rollins, Humana, Inc.

Family Engagement | Introductory

1:00 pm - 4:00 pm | Marriott Salon IX

Developmental Relationships

Charla Hale, Search Institute

Family Engagement | Research & Evaluation | Introductory

Monday, November 18

Introductory: geared toward attendees who are new to the topic. The presentation is focused on fundamental concepts or provides an overview of the topic.

Intermediate: geared towards attendees who have some knowledge of the topic. The presentation delves beyond fundamental concepts.

Advanced: geared towards attendees who have many years' experience working in the topic. The presentation explores the topic in depth.

7:00 am - 5:00 pm | Marriott Foyer

Registration Open

8:00 am - 9:00 am | Marriott Foyer

Exhibits and Networking

9:00 am - 10:15 am

Concurrents I

9:00 am - 10:15 am | Bluegrass 1 & 2

Creating Equitable and Thriving Communities Through Family Learning Systems

Tracy Teater, National Center for Families Learning

Miranda Scully, Fayette County Public Schools, Kentucky

Amy Shane, Holt/Boyd Community Connections Collaborative, Nebraska

Carla DeBose, Technical College System of Georgia / Georgia Certified Literate Community Program

Wendy Falb, Literacy Center of West Michigan

Family Engagement | Family Literacy | Family Leadership | Intermediate

9:00 am - 10:15 am | Kentucky A & B

Engaging Families Through Diverse Children's Books

Rebecca Chrystal, Raising a Reader

Family Engagement | Family Literacy | Introductory

9:00 am - 10:15 am | Filly & Thoroughbred

Reframing the Conversation: Lessons From Research

Sherri Wilson, National Association for Family, School and Community Engagement

Family Engagement | Research & Evaluation | Introductory



Monday, November 18

9:00 am - 10:15 am | Rose

Focusing on Family Engagement

Dyan Shauer, Tuscarora Intermediate Unit 11
Kim Gavlick, Luzerne County Community College

Family Engagement | Family Literacy | Intermediate

9:00 am - 10:15 am | Kentucky C & D

After School Programs: A Data-Driven Evaluation

Dr. Ryan Young and Desmond Keller, Black Hills Special Services

Research & Evaluation | Introductory

9:00 am - 10:15 am | Win

Cultivating Parents With Digital Skills

Ana Ramirez, Communities in Schools of the Dallas Region

Family Engagement | Family Literacy | Introductory

9:00 am - 10:15 am | Place

Shiyii: Nurturing Trust With FACE Families

Dr. Candace Adams, Salt River Elementary School

Family Engagement | Intermediate

9:00 am - 10:15 am | Skybox

Bridging the Gaps: Navigating Cross-Sector Relationships in Family Engagement

Kate Garvin, Keystone Policy Center
Patti Schmitt, Colorado State University
Claudine Norden, Family Leadership Training Institute

Family Engagement | Family Leadership | Introductory

9:00 am - 10:15 am | Show

Promising Practices: Advancing Equity in Early Childhood Education Policy Through Family Leadership

Whitney Fields and Cassandra McGraw, National Center for Families Learning
Chiffontae Ross and Joe Gallant, Kids Win Missouri
Deborah DePaoli and Shakirah McConner, Institute for Child Success
Jessica Woltjen, Georgia Early Education Alliance for Ready Students

Family Leadership | Policy & Advocacy | Introductory

9:00 am - 11:00 am | Jockey Club

Research Advisory Council Closed Meeting

Monday, November 18

10:30 am - 11:45 am

Concurrents II

10:30 am - 11:45 am | Bluegrass 1 & 2

ALL IN: Generating Access to Adult Literacy Skills

Sarah Cacicco, Adult Literacy and Learning Impact Network
James Condon, FTI Consulting



Policy & Advocacy | Research & Evaluation | Introductory

10:30 am - 11:45 am | Show

New LINCS Courses: Online Learning for Educators

Adria Katka, American Institutes for Research

Family Literacy | Introductory

10:30 am - 11:45 am | Kentucky C

FACE Family Circle

Wilbert Nez, Ch'ooshgai Community School

Family Engagement | Intermediate

10:30 am - 11:45 am | Skybox

An Update on Family Literacy Funding

Dr. Carol Clymer, Institute for the Study of Adult Literacy
Elisabeth McLean, Ph.D., Goodling Institute for Research in Family Literacy, Pennsylvania State University
Tony Peyton, National Center for Families Learning

Family Literacy | Policy & Advocacy | Introductory

10:30 am - 11:45 am | Thoroughbred

Can't, Won't...or Untapped Potential?

Kayla Spence, Crete Public Schools

Family Leadership | Introductory

10:30 am - 11:45 am | Kentucky D

Access in Adult Education Through Translanguaging

Elizabeth (Betsy) Ljubic, Maryland Department of Labor

Family Literacy | Introductory

Monday, November 18

10:30 am - 11:45 am | Kentucky B



The Multilingual Classroom

Brenda Gardner and Maya Gutierrez, Tandem, Partners in Early Learning

Family Engagement | Family Literacy | Introductory

10:30 am - 11:45 am | Kentucky A

It's All About the Books: Family Partnerships to Transform Child Literacy Over the Summer Months

Isabel Geffner, Mary Mathew, and Wilmarie Citron-Tyson, Book Harvest

Family Engagement | Family Literacy | Intermediate

10:30 am - 11:45 am | Filly

Approaches to Multilingualism in Family Literacy

Dr. Alexis Cherewka, World Education

Anna Kaiper-Marquez, Ph.D., National Center for Families Learning

Family Leadership | Policy & Advocacy | Intermediate

10:30 am - 11:45 am | Place

How to Implement Programming Like a Rock Star!

Dr. Kay Combs, Kelley Anderson, and Jeana Wallace, Thorn Hill Education Center

Family Engagement | Family Literacy | Introductory

10:30 am - 11:45 am | Rose

Are You Doing School TO Families or WITH Families?

Dr. Jill Handley, Jefferson County Public Schools

Lara Donnelly, Lara Donnelly LLC

Family Engagement | Intermediate

10:30 am - 11:45 am | Win

Elevating Family Engagement Through Home Visitation Programs

Ernesto Mendizabal, Irving ISD HIPPY

Ra'Chelle Dennis, Martha's Table

Family Leadership | Introductory

Monday, November 18

12:00 pm - 1:30 pm | Marriott Ballroom

Opening Session With Lunch

The stage is set, the anticipation is building! Grab lunch in the Marriott Ballroom Foyer (included in your registration) and settle in for the kick off of the 2024 Families Learning Conference. We'll begin the session with a "Call to the Post" from Official Churchill Downs Bugler Steve Buttleman and a warm welcome from NCFL's President & CEO, Felicia C. Smith, Ed.D. The morning's keynote will be provided by Dana Suskind, MD, founder and co-director of the TMW Center for Early Learning + Public Health at the University of Chicago. A recognized thought leader on the national stage, Dr. Suskind has dedicated her research and clinical life to optimizing foundational brain development and preventing early cognitive disparities and their lifelong impact. Her presentation will focus on the potential of smart technology to support caregivers and optimize children's early development.

Felicia C. Smith, Ed.D., National Center for Families Learning

Dana Suskind, MD, University of Chicago

Alicia Isaiah, Play with Purpose

Kristen Byrd, PNC Bank, Kentucky

Britainy Beshear, First Lady of Kentucky

1:45 pm - 3:00 pm

Concurrents III

1:45 pm - 3:00 pm | Bluegrass 1 & 2

Funders in Conversation: Diverse Philanthropic Viewpoints on Family Engagement and Multigenerational Education

Moderated by **Kyle Malone**, Grantmakers for Education

- Panelists:**
Denine Torr, Dollar General Literacy Foundation
Dr. Kimberly Brenneman, Heising-Simons Foundation
Dr. Nancy Cable, William R. Kenan, Jr. Charitable Trust
Bleik Pickett, James Graham Brown Foundation

Policy & Advocacy | Introductory

1:45 pm - 3:00 pm | Skybox

Build Social-Emotional Learning Skills With Global Game Changers

Jan Helson and Anne Walker, Global Game Changers Children's Education Initiative, Inc.

Family Engagement | Introductory

1:45 pm - 3:00 pm | Kentucky C & D

Parent Ambassadors: Parent Engagement, It Matters

Ilissa Talkington and Jess Parker, Nebraska Early Childhood Collaborative

Family Leadership | Policy & Advocacy | Intermediate

Monday, November 18

1:45 pm - 3:00 pm | Rose

Beyond the Book: Family Literacy Activities

Pamela Cote and Heather Brinkworth, Barbara Bush Foundation for Family Literacy

Family Engagement | Family Literacy | Intermediate

1:45 pm - 3:00 pm | Place

Home Literacy Visits: Diving Into the Community

Megan Singh, Enlace Academy



Family Literacy | Intermediate

1:45 pm - 3:00 pm | Win

The Family Literacy Edition of The COABE Journal

Don Finn, Regent University



Family Engagement | Family Literacy | Intermediate

1:45 pm - 3:00 pm | Show

CFEC's SC Parent Leadership Partner (PLP) Program

Claressa Thompson and Yasha Becton, Carolina Family Engagement Center, University of South Carolina

Family Engagement | Family Leadership | Intermediate

1:45 pm - 3:00 pm | Kentucky A & B

Empowering Families Through Play

Allison Miller, Ed.D. and Jordan Dospil, National Center for Families Learning
Dana Stewart and Julia Levy, Sparkler Learning

Family Engagement | Family Leadership | Introductory

1:45 pm - 3:00 pm | Filly & Thoroughbred

Measuring What Matters in Family Literacy

Dr. Carol Clymer, Institute for the Study of Adult Literacy
Dr. Esther Prins, Pennsylvania State University
Elisabeth McLean, Ph.D., Goodling Institute for Research in Family Literacy, Pennsylvania State University

Family Literacy | Research & Evaluation | Intermediate

Monday, November 18

3:00 pm - 3:30 pm | Marriott Foyer

Afternoon Break in Exhibit Area

Take time to peruse the exhibitor tables and remember to get a stamp from each exhibitor you visit! Make sure to visit Louisville Tourism, who will only be onsite Monday.

3:30 pm - 4:30 pm

Concurrents IV

3:30 pm - 4:30 pm | Bluegrass 1 & 2

Family Math: Building Parent and Caregiver Confidence and Math Positivity to Support Early Math Learning

Holly Ackerman and Emily Cornett, Kentucky Educational Television
Khrystal Alas, PBS SoCal



Family Engagement | Introductory

3:30 pm - 4:30 pm | Rose

Building Bridges Together

Tracy Gallegos and Estrella Ruiz, Mesa County Valley School District 51

Family Engagement | Family Leadership | Intermediate

3:30 pm - 4:30 pm | Skybox

Overcoming Barriers Through Policy and Advocacy

Jenna Meglen, Jenny Hobson, and Becky Phelps, Partners for Rural Impact

Family Engagement | Policy & Advocacy | Introductory

3:30 pm - 4:30 pm | Kentucky A

Building Diverse Partnerships for Education Equity

Max Altman and Allison Boyle, Southern Education Foundation

Family Engagement | Policy & Advocacy | Introductory

3:30 pm - 4:30 pm | Filly

What Works: Family Literacy Networking

Leesa Kraeger and Jeff O'Field, National Center for Families Learning

Family Engagement | Family Literacy | Introductory

Monday, November 18

3:30 pm - 4:30 pm | Place

FACE Forward: Family Engagement in the Forefront

Miranda Scully, Sharon Mofield-Boswell, and Lindsay Mattingly, Fayette County Public Schools

Family Engagement | Introductory

3:30 pm - 4:30 pm | Kentucky B

Co-Design as the Driving Force Behind Your Work

Jessica Fuller, RESCHOOL

Family Engagement | Family Leadership | Introductory

3:30 pm - 4:30 pm | Kentucky C

Bridging Family Events to Classroom Learning

Dr. Gera Nelson, Morehead State University

Family Engagement | Family Literacy | Introductory

3:30 pm - 4:30 pm | Thoroughbred

Fostering an Education Continuum: Cradle-to-Career

Amanda Rosemann, Chris Huntley, Randi Kennedy, and Amanda Mehl, shift_ed

Research & Evaluation | Introductory

3:30 pm - 4:30 pm | Kentucky D

Helping Families Go Beyond Grades and Report Cards

Cornelia Calliste, Learning Heroes

Family Engagement | Family Literacy | Introductory

3:30 pm - 4:30 pm | Show

The Impact of Summative Evaluation Studies

Dr. Lori Nebelsick-Gullett and Ellie Monroe, NG Consulting

Tracy Teater, Sherri Hudson, and Hannah Van Horn, National Center for Families Learning

Research & Evaluation | Advanced

Monday, November 18

3:30 pm - 4:30 pm | Win

Teen Motherhood and the Effects on Early Childhood Education and Social-Emotional Development

Onia Mayberry, Heal

Stephanie Harmon, United Parents

Family Leadership | Introductory

5:00 pm - 6:30 pm | Marriott Foyer and Ballroom

Cheers to 35 Years!

Welcome Reception Sponsored by Brown-Forman

Enjoy an evening of networking, nostalgia, and making new connections set to the tunes of our live Bluegrass band, Hog Operation. Capture fun moments at the selfie station and savor a selection of gourmet appetizers. Each attendee will receive one drink ticket, compliments of Brown-Forman, to raise in a toast to celebrate our collective journey in family learning. Here's to the first 35 years and many more to come!



Tuesday, November 19



7:30 am - 5:00 pm | Marriott Foyer

Registration Open

7:30 am - 8:30 am | Marriott Foyer

Breakfast, exhibits, networking

Start your morning with a continental breakfast sponsored by Heising-Simons Foundation. Be sure to explore the exhibit tables and collect stamps for your Exhibitor Passport!

8:30 am - 9:30 am | Marriott Ballroom

General Session

Tuesday begins with a keynote by children’s book author and entrepreneur Daniel Vandever (Diné). His debut picture book, “Fall in Line, Holden!,” was a 2018 Honor Book for the American Indian Youth Literature Award and his follow-up picture book, “Herizon,” was recognized as the Best Picture Book of 2022 by the American Indian Library Association. Mr. Vandever will reflect on literacy and education for Indigenous peoples, relying on his multiple perspectives as both an author and a father.

Felicia C. Smith, Ed.D., National Center for Families Learning

Daniel Vandever, South of Sunrise Creative

William Mehojah, Jr., Bureau of Indian Education

Larissa Red Eagle, FACE participant

General Session



9:30 am - 10:30 am | Marriott Foyer

Daniel Vandever Book Signing

Following Daniel Vandever’s keynote address, join us in the Marriott Foyer for a book signing with the author. Local bookseller Carmichael’s will be on hand for those wishing to purchase Mr. Vandever’s titles.

Tuesday, November 19

9:45 am - 11:00 am

Concurrents V

9:45 am - 11:00 am | Bluegrass 1 & 2

Latino Families With Children: Insights and Experiences With Social Assistance Programs and Early Education and Care

Dr. Lisa Gennetian, Duke University

Research & Evaluation | Policy & Advocacy

9:45 am - 11:00 am | Kentucky C

Power of Parent Voice: Tools for Political Impact

Jodi-Renee Girón, First Five Nebraska

Policy & Advocacy | Intermediate

9:45 am - 11:00 am | Thoroughbred

Integrating a SPICE Approach With PACT

Yoland Moore, Department of Youth and Community Development

Family Engagement | Family Literacy | Intermediate

9:45 am - 11:00 am | Rose

Policy & Practice Wins From Partners in KY SFEC

Grace McKenzie, Prichard Committee for Academic Excellence

Allison Miller, Ed.D., National Center for Families Learning

Kathy Burkhardt, Learning Grove

Jenny Hobson, Partners for Rural Impact

Family Engagement | Policy & Advocacy | Advanced

9:45 am - 11:00 am | Filly

Bringing Your Health Literacy Class to the Clinic

Karrie Roy and McKenna Cook, Literacy Center of West Michigan

Family Literacy | Policy & Advocacy | Introductory

9:45 am - 11:00 am | Skybox

Welcome All Families Through More Inclusive Forms

Teri Walker, CommonTeri Services

Family Engagement | Research & Evaluation | Intermediate

Tuesday, November 19

9:45 am - 11:00 am | Show

Tools for Increasing Family Retention and Participation in the Midst of a Pandemic

Joye Ryan-Jones, Springdale District ESL Office

Family Engagement | Family Literacy | Intermediate

9:45 am - 11:00 am | Place

Ecosystem Partnerships to Fund Equitable Learning

Selamawit Gebre, RESCHOOL

Policy & Advocacy | Research & Evaluation | Introductory

9:45 am - 11:00 am | Kentucky A

Why Family Engagement Is Key in a New School

Adrienne Thomas and Dr. Kara Ammerman, Jefferson County Public Schools

Family Engagement | Family Leadership | Introductory

9:45 am - 11:00 am | Kentucky B

Learning With Smithsonian's Talk With Me Toolkit

Elisabeth McLean, Ph.D. and Dr. Carol Clymer, Goodling Institute for Research in Family Literacy, Pennsylvania State University

Dr. Esther Prins, Pennsylvania State University

Family Engagement | Research & Evaluation | Introductory

9:45 am - 11:00 am | Kentucky D

Project-Based Learning: Build Skills and Community

Judy Basham, Pine Hill School

Ruth Sugar, National Center for Families Learning

Family Engagement | Family Leadership | Introductory

9:45 am - 11:00 am | Win

Empowering Families: Strategies for Effective Early Childhood Engagement

Felicia Wilson, Bronx House

Maggie Tovar, Avondale School District

Family Leadership | Introductory

11:00 am - 11:30 am | Marriott Foyer

Break in Exhibit Area

You still have time to check out our exhibitors! Once you receive stamps from all exhibitors, return your Exhibitor Passport to the registration desk to be entered to win a prize, courtesy of State Farm/Matt Miller Insurance and Highlights.

Tuesday, November 19

11:30 am - 12:45 pm

Concurrents VI

11:30 am - 12:45 pm | Kentucky C & D

Meet LEO: Learn and Explore Online With Google

Arden Haselmann, Nisha Patel, and Nazifa Nasim, Google



Family Literacy | Introductory

11:30 am - 12:45 pm | Place

Partnerships: Where Family Literacy Is Fun & Free!

Ashley Wagers, Jackson County Public Library

Melanie Warga, Ohio County Public Library

Family Engagement | Family Literacy | Intermediate

11:30 am - 12:45 pm | Rose

Expanding the Community Vision for Families

Gene Roehlkepartain, Ph.D., Search Institute

Family Engagement | Family Leadership | Advanced

11:30 am - 12:45 pm | Show

Kids Read Now: A Site Success Story for Families

Kristen Walter, Kids Read Now

Kelly Moran, Chardon Local School District

Family Engagement | Family Literacy | Intermediate

11:30 am - 12:45 pm | Thoroughbred

Empowering Caregivers in Kindergarten Readiness

Imani-Gabrielle Sie-Duke and Michelle Raabe, Save the Children

Family Engagement | Family Literacy | Intermediate

11:30 am - 12:45 pm | Skybox

Equipping Families to Support Learning at Home

Bev Schumacher, Retiring from Learning Props

Family Engagement | Family Literacy | Intermediate

Tuesday, November 19

11:30 am - 12:45 pm | Filly

Sustaining Success

Ryan Hinz, Crete Public Schools

Family Literacy | Policy & Advocacy | Intermediate

11:30 am - 12:45 pm | Kentucky A

Empowering Families Through Adult Education

Elizabeth Daniels and Jacqueline Korengel, Kentucky Educational Television



Family Literacy | Introductory

11:30 am - 12:45 pm | Kentucky B

Why We Love Our Public Libraries

Amy Olson, Kentucky Department for Libraries and Archives

Jasmine Rockwell, State Library of North Carolina

Kate Brunner, Colorado State Library

Family Engagement | Family Literacy | Intermediate

11:30 am - 12:45 pm | Win

Championing a More Open-Minded, Inclusive Society

Jo Haas, American Printing House for the Blind



Family Engagement | Introductory

11:30 am - 1:30 pm | Bluegrass 1 & 2

FACE Closed Meeting

12:45 pm - 2:15 pm

Lunch on Your Own

Take time to enjoy some fresh air and check out one of the many restaurants and eateries nearby. Looking for recommendations? Louisville Tourism can help!



Tuesday, November 19

2:15 pm - 3:15 pm

Concurrents VII

2:15 pm - 3:15 pm | Rose

Shared Reading: A Strategy to Boost MATH learning!

Holly Kreider, National Association for Family, School and Community Engagement

Rebecca Chrystal, Raising a Reader

Dr. Savitha Moorthy, Tandem, Partners in Early Learning

Dr. Gigliana Melzi, New York University



Family Engagement | Family Literacy | Introductory

2:15 pm - 3:15 pm | Kentucky D

Family Social Identity and Advocacy: Who Is Heard?

Liz Dempsey Lee, Lesley University

Family Engagement | Policy & Advocacy | Intermediate

2:15 pm - 3:15 pm | Thoroughbred

Elevating Voices: An Equitable Arts-Based Approach to Engaging Multilingual Families

Micheline Lavalle, Fairfax County Public Schools

Family Engagement | Family Literacy | Intermediate

2:15 pm - 3:15 pm | Kentucky C

Building Bridges in the Early Childhood Landscape

Diane Frentzel, Delaware Readiness Teams

Cynthia Shermeyer, Literacy Delaware

Family Engagement | Family Literacy | Introductory

2:15 pm - 3:15 pm | Show

Unified Efforts: Structured Collaboration for Tackling Complex Challenges

Dr. Ameshica Linsey, GOAL Collective

Policy & Advocacy | Research & Evaluation | Introductory

2:15 pm - 3:15 pm | Kentucky B

Workshops: Moving From Relationship to Partnership

Katrina Brown and Anna Gardner-Andrews, HOME WORKS! The Teacher Home Visit Program

Family Engagement | Family Literacy | Intermediate

Tuesday, November 19

2:15 pm - 3:15 pm | Filly

CT as an Early Literacy Building Block

Emily Cornett, Kentucky Educational Television
Lauren Brandstetter, Kenton County Public Library



Family Engagement | Family Literacy | Introductory

2:15 pm - 3:15 pm | Kentucky A

Family Literacy 2.0! Let's Talk Workforce Ed!

Jeff Arnott, Ed.D., Lot 12 Education

Family Literacy | Policy & Advocacy | Intermediate

2:15 pm - 3:15 pm | Skybox

Policy and Politics Update - DC and Beyond

Kuna Tavalin, Stride Policy Solutions
Blair Wriston, The Education Trust
Tony Peyton, National Center for Families Learning

Intermediate

Family Engagement | Family Literacy | Family Leadership | Policy & Advocacy

2:15 pm - 3:15 pm | Win

The Dad Difference: Equity-Focused Best Practices for Engaging Fathers and Father Figures

Maggie Hanna, Eastern Michigan University
Alexis Thomason, The Noble Maat Collective

Family Leadership | Introductory

2:15 pm - 3:15 pm | Place

PDG Closed Meeting

2:15 pm - 3:30 pm | Bluegrass 1 & 2

SFEC Network Closed Meeting

3:15 pm - 3:45 pm | Marriott Foyer

Afternoon Break in Exhibit Area

Grab a light snack, courtesy of PNC, before heading into the Marriott Ballroom for PNC's EdTalk!

Tuesday, November 19

3:45 pm - 4:45 pm | Marriott Ballroom

PNC EdTalk - Outdoor Play as a Vehicle for Learning and Development

Moderated by:
Sally McCrady, PNC Bank/PNC Foundation

Panelists:
Andrea Brown, National Center for Families Learning
Cori Gadansky, Community Coordinated Child Care
Claude Stephens, Bernheim Arboretum and Research Forest



General Session

5:00 pm - 6:30 pm | Bluegrass 1 & 2

Family Learning Network Closed Meeting

5:00 pm

Dinner on own

Check out Louisville Tourism's recommendations for dining in the area!



Wednesday, November 20

7:30 am - 8:30 am | Marriott Foyer

Coffee, exhibits, networking

Enjoy morning coffee sponsored by PNC Grow Up Great® today. This is your last chance to collect stamps for your Exhibitor Passport! Take your completed passport to the registration desk to be entered into the prize drawing at the Closing General Session. *Must be present to win.

8:30 am - 9:30 am

Concurrents VIII

8:30 am - 9:30 am | Marriott Salon X

Community Book Gardens: Fertile Soil for Community-Based Family Literacy

Mike McGuffee, Unite for Literacy
James Erikson, Ph.D., University of Northern Colorado

Family Engagement | Family Literacy | Introductory

8:30 am - 9:30 am | Marriott Salon IX

Family Fun and Learning: Let's Explore Together!

Jonathan Hall, Carnegie Center for Literacy & Learning

Family Engagement | Family Literacy | Intermediate

Wednesday, November 20

8:30 am - 9:30 am | Marriott Salon VII

Powerful Partnerships Encourage Family Engagement: Lessons Learned Through Kentucky's ARP

Allison Miller, Ed.D., National Center for Families Learning
Leanne French, Louisville Metro Government
Alma Aldana, Backside Learning Center
Whitney Gaines, Louisville YMCA

Family Engagement | Introductory

8:30 am - 9:30 am | Marriott Salon VIII

Join an Adult Education Innovation Exploration!

Sharon Bonney, Coalition on Adult Basic Education



Family Literacy | Family Leadership | Introductory

9:45 am - 11:00 am

Concurrents IX

9:45 am - 11:00 am | Marriott Salon VIII

A Conversation With Kentucky's Driving Possibilities Team: Lessons Learned From Codesigning With Community, Industry, and Educational Partners

Cherry Boyles, National Center for Families Learning
Kim Sweazy, Toyota
Carrie Boling, Fayette Education Foundation
Carrie Rogers and **Miranda Scully**, Fayette County Public Schools
Jennifer Tackett and **Stephanie Emmons**, Scott County Schools

Family Engagement | Family Leadership | Introductory

We want to hear from you! At the close of our conference, attendees will receive an email to complete our post-event survey. Please follow the link and share your feedback so that we can create the best experience possible for future attendees!



Wednesday, November 20

9:45 am - 11:00 am | Marriott Salon VII

Co-Creating the Nebraska Parent Conference: A Collaborative Partnership With Families

Todd Schmeekle and **Mariana Schell**, Nebraska Children and Families Foundation
Jess Parker and **Ilissa Talkington**, Nebraska Early Childhood Collaborative

Family Engagement | Family Leadership | Introductory

9:45 am - 11:00 am | Marriott Salon X

Modernizing Policy by Integrating a New Framework

Mary Wilson, PDE - Division of Adult Education

Family Engagement | Policy & Advocacy | Intermediate

9:45 am - 11:00 am | Marriott Salon IX

Family Literacy Closed Meeting

11:15 am - 12:45 pm | Marriott Ballroom

Closing General Session

Let's end strong, conference-goers! At our closing, we'll welcome Mildred Otero, President of Leadership for Educational Equity (LEE), an organization focused on developing leaders to change the face and values of civic leadership in America. Before joining LEE, Ms. Otero served as chief education counsel for the U.S. Senate Committee on Health, Education, Labor, & Pensions, where she managed the Senate majority's education agenda, and its policy development and strategy for children from cradle to career. She'll consider the importance of building a diverse movement of equity-minded leaders across civic leadership pathways and the significance of public service in changing laws for families and communities.

Felicia C. Smith, Ed.D., National Center for Families Learning
Mildred Otero, Leadership for Educational Equity
Rosaura Ibeth Espinoza Zavala, Denver Activate! Local
Holly Walters, Toyota Motor North America
Jacqueline Coleman, Lieutenant Governor of Kentucky

General Session



FAMILIES LEARNING
CONFERENCE

November 18-20, 2024 + Louisville, KY

CERTIFICATE OF ATTENDANCE

The National Center for Families Learning
is proud to recognize

for participating in the 2024 Families Learning
Conference, held November 18-20, 2024,
in Louisville, Kentucky.

Fifteen Professional Development Hours

Dr. Felicia Cumings Smith, President
National Center for Families Learning



35 years of education
solutions for families

Explore our history and join us
in strengthening family learning
across communities.



Scan the QR code
to learn more.



ncfi[®] | FAMILIES LEARNING
CONFERENCE
'24
National Center for
Families Learning

Conference.FamiliesLearning.org